

Section II.

TM 9-2320-280-24P-1

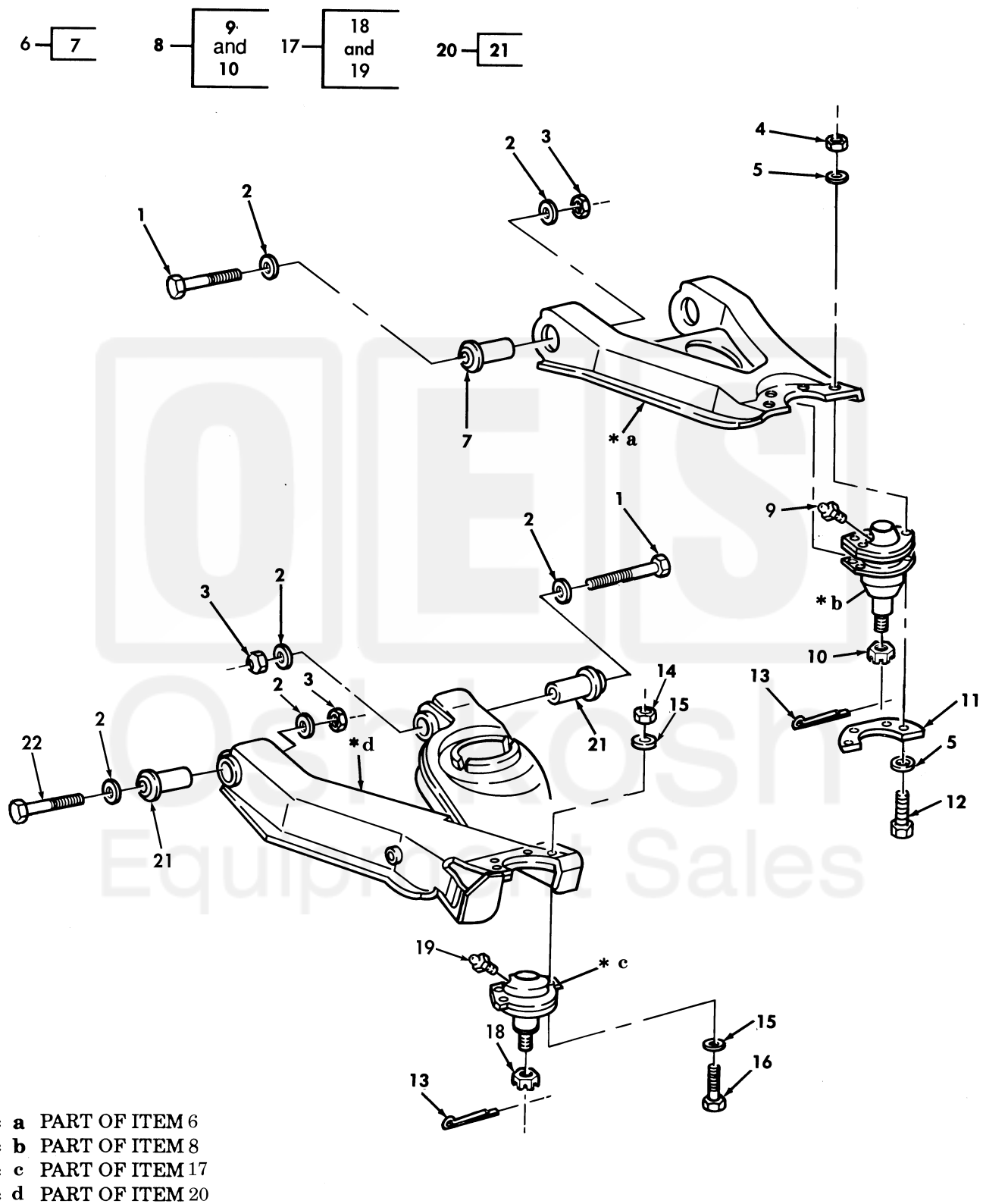


Figure 144. Front Control Arms, Ball Joints, and Mounting Hardware.

| SECTION II | | TM9-2320-280-24P | | | | | |
|---|----------|------------------|-------|-----------------|---|-----|--|
| (1) | (2) | (3) | (4) | (5) | (6) | (7) | |
| ITEM NO | SMR CODE | NSN | CAGEC | PART NUMBER | DESCRIPTION AND USABLE ON CODES(UC) | QTY | |
| GROUP 1004 STEERING AND LEANING WHEEL MECHANISM | | | | | | | |
| FIG. 144 FRONT CONTROL ARMS,BALL JOINTS,AND MOUNTING HARDWARE | | | | | | | |
| 1 | PAOZZ | 5305009474361 | 80204 | B1821BH075C475N | SCREW,CAP,HEXAGON H 3/4-10 X 4.75.. | 6 | |
| 2 | PAOZZ | 5310011474052 | 23862 | 2436168 | WASHER,FLAT 3/4..... | 16 | |
| 3 | PAOZZ | 5310004093333 | 96906 | MS51943-45 | NUT,SELF-LOCKING,HE 3/4-10..... | 8 | |
| 4 | PAOZZ | 5310008140673 | 96906 | MS51943-35 | NUT,SELF-LOCKING,HE 5/16-18..... | 8 | |
| | | | | | UOC:AVY,A11,A13,A14,A15,A20,A24,A25,A26,A27,B16,B17,B18,HVY,H11,H13,H14,H15,H16,H17,H18,H20,H21,H24,H25,H26,H27,H28,MMM | | |
| 4 | PAOZZ | 5310008140672 | 96906 | MS51943-36 | NUT,SELF-LOCKING,HE 3/8-24..... | 8 | |
| | | | | | UOC:BVY,B15,B20,B24,B25,C17,NNN | | |
| 5 | PAOZZ | 5310011191024 | 24617 | 2436162 | WASHER,FLAT 5/16..... | 16 | |
| | | | | | UOC:AVY,A11,A13,A14,A15,A20,A24,A25,A26,A27,B16,B17,B18,HVY,H11,H13,H14,H15,H16,H17,H18,H20,H21,H24,H25,H26,H27,H28,MMM | | |
| 5 | PAOZZ | 5310014124013 | 24617 | 2436163 | WASHER,FLAT 3/8..... | 16 | |
| | | | | | UOC:BVY,B15,B20,B24,B25,C17,NNN | | |
| 6 | PAOFF | 2530011757211 | 34623 | 5584769 | ARM,CONTROL,VEHICUL FRONT,L.H..... | 1 | |
| | | | | | UOC:AVY,A11,A13,A14,A15,A20,A24,A25,A26,A27,B16,B17,B18,HVY,H11,H13,H14,H15,H16,H17,H18,H20,H21,H24,H25,H26,H27,H28,MMM | | |
| 6 | PAOFF | 2530011764650 | 34623 | 5584770 | ARM,CONTROL,VEHICUL FRONT,R.H..... | 1 | |
| | | | | | UOC:AVY,A11,A13,A14,A15,A20,A24,A25,A26,A27,B16,B17,B18,HVY,H11,H13,H14,H15,H16,H17,H18,H20,H21,H24,H25,H26,H27,H28,MMM | | |
| 6 | PAOFF | 2530014147844 | 19207 | 12460167 | ARM,CONTROL,VEHICUL FRONT,L.H..... | 1 | |
| | | | | | UOC:BVY,B15,B20,B24,B25,C17,NNN | | |
| 6 | PAOFF | 2530014131365 | 19207 | 12460151 | ARM,CONTROL,VEHICUL FRONT,R.H..... | 1 | |
| | | | | | UOC:BVY,B15,B20,B24,B25,C17,NNN | | |
| 7 | PAFZZ | 3120011865527 | 19207 | 12338270 | .BUSHING,SLEEVE..... | 2 | |
| 8 | PAOZZ | 2530011883685 | 98349 | C-205-TEZ-35 | PARTS KIT,BALL JOIN..... | 2 | |
| | | | | | UOC:AVY,A11,A13,A14,A15,A20,A24,A25,A26,A27,B16,B17,B18,HVY,H11,H13,H14,H15,H16,H17,H18,H20,H21,H24,H25,H26,H27,H28,MMM | | |
| 8 | PAOZZ | 2530014131366 | 34623 | 6007755 | PARTS KIT,BALL JOIN..... | 2 | |
| | | | | | UOC:BVY,B15,B20,B24,B25,C17,NNN | | |
| 9 | PAOZZ | 4730000504203 | 96906 | MS15001-1 | .FITTING,LUBRICATION..... | 1 | |
| 10 | PAOZZ | 5310008507004 | 96906 | MS35692-54 | .NUT,PLAIN,SLOTTED,H 5/8-18..... | 1 | |
| 11 | PAOZZ | 2530012101324 | 19207 | 12338320 | RETAINER,BALL JOINT UPPER..... | 2 | |
| | | | | | UOC:AVY,A11,A13,A14,A15,A20,A24,A25,A26,A27,B16,B17,B18,HVY,H11,H13,H14,H15,H16,H17,H18,H20,H21,H24,H25,H26,H27,H28,MMM | | |
| 12 | PAOZZ | 5305014125994 | 19207 | 12460159 | SCREW,CAP,HEXAGON H 3/8-24 X 1.375.. | 8 | |
| | | | | | UOC:BVY,B15,B20,B24,B25,C17,NNN | | |
| 12 | PAOZZ | 5306002264829 | 80204 | B1821BH031C125N | SCREW,CAP,HEXAGON H 5/16-18 X 1.125 | 8 | |